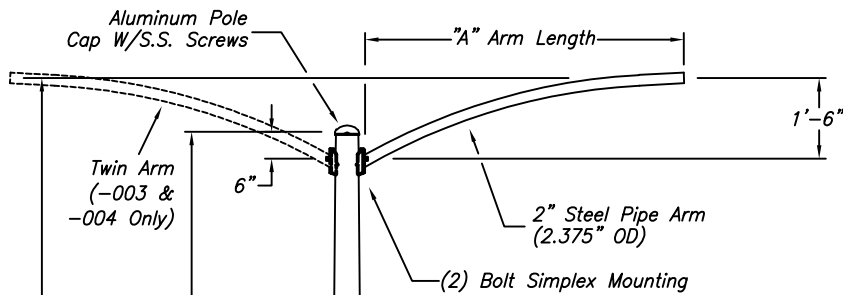
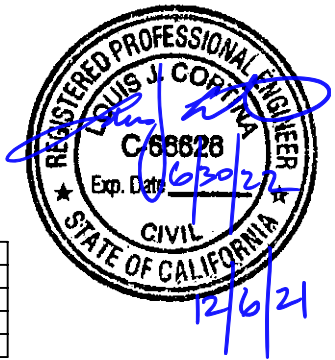


This Design Is Prototypical Only And Not To Be Used As Site Specific Engineering



PG&E Matl. Code	Hapco PN	"A" Arm Lgth.	Config.
M357120	105966-001	6'-0"	Single
M357230	105966-002	8'-0"	Single
M357189	105966-003	6'-0"	Twin
M357190	105966-004	8'-0"	Twin

This Pole Has Been Designed For 90 MPH Wind Speeds (3 Second Gust) Per AASHTO LTS-6 (2013) And All Interim Revisions When Supporting A Single Or Double Luminaire (As Indicated) With An EPA = 2.4 sq. ft. And Weight Of 60 lbs. Weight Each.

32'-6"
Mounting
Height

31'-6"
Shaft
Length

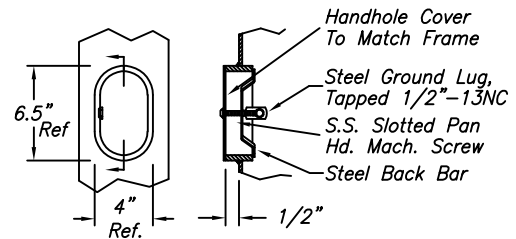
8.0" Butt Dia. x 3.6" Top Dia.
x 11 Gauge Steel Pole,
ASTM A595, Grade A,
Uniform Taper (0.14" per ft)

Galvanized Finish With Quench
(Hapco Finish Code 1Q)

4" x 6 1/2" Reinforced
Handhole Frame With
1/2"-13NC Ground Lug

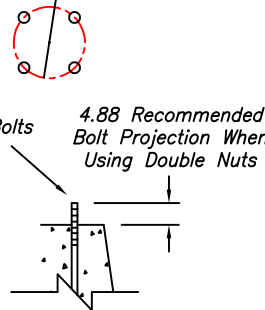
(4) 1"-8NC Galv. Steel Anchor Bolts
(See M351454 Detail, By Others)

1'-6"

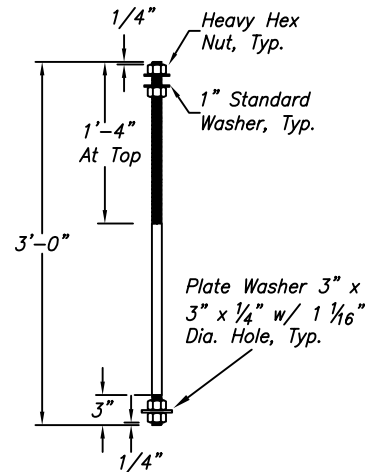


4" x 6.5" Reinforced Handhole

Base Flange Has Slotted
Holes To Fit A 11" To
12" Bolt Circle With A
Minimum Of 1/8"
Tolerance In Any Direction.



Square Base Plate With Slotted Holes,
Galvanized With Quench Along With Pole
(See MBPPR8011011D1 For Detail)



1" Dia. Anchor Bolt Assembly
PG&E Material Code M351454

- Notes: 1) All Welded Material Shall Be Weldable-Grade, Hot-Rolled, Commercial Quality Carbon Steel Tubing.
2) Base Plate and Handhole Material Shall Conform to ASTM A36 Or Equivalent, 36 ksi Yield.
3) All Welds Shall Conform To AWS D1.1 Using ER70S-6 Electrodes.

Order PG&E Material Code M351454
For Anchor Bolt Kit (Bolts, Nuts & Washers), Includes (4) Bolt Assemblies.

NO.	REVISIONS	DATE
1	Revision 2, Various Updates (CC)	04/21
2	Revision 3, Various Updates (CC)	06/21



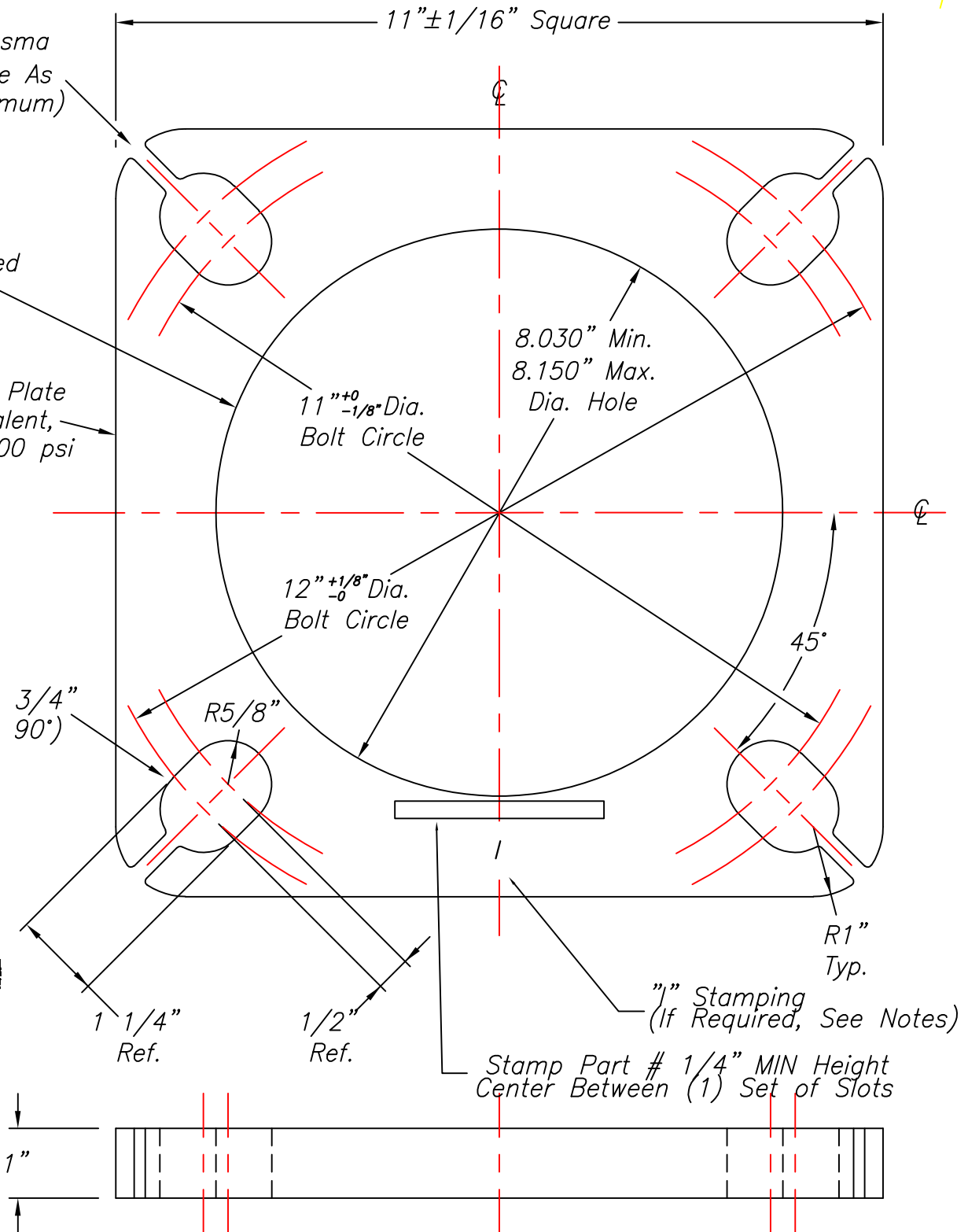
TITLE	357120, 357230, 357189, 357190
CUSTOMER	PACIFIC GAS & ELECTRIC CO.
SCALE	NTS
DATE	01/08/2021
BY	CC
DWG. NO.	105966
CHK'D	

Cutting Tool / Plasma
Lead In Permissible As
Shown (1/4" Maximum)

No Flashing Allowed
(Inner Cut Only)

1" X 11" Sq. Steel Plate
ASTM A36 Or Equivalent,
Minimum Yield 36,000 psi

1 1/4" ± 1/16" x 1 3/4"
Slotted Holes (4 @ 90°)



- Notes: 1. Gouge Preferred To Bur On Interior of Base Weld Socket
2. All Base Plates Produced Outside Of The USA Must Be Stamped With An
1/4" Min. Ht. "I" Midway Between (1) Set Of Anchor Bolt Slots As Shown
3. Blasted Finish

NO.	REVISIONS	DATE
1	Finish & Flashing Note Added (DG)	06/12
2	Added Slot Tolerance (PM)	12/13
3	Additional Matl. Spec. & "I" Note Added (CC)	12/14
4	Added Part # Stamp (JWD)	06/18

hapco
Abingdon, Va.

TITLE	RTS BASE PLATE, FOR 8" x .120"	
CUSTOMER	WITH 1" ANCHOR BOLTS	
SCALE	NTS	DATE 05/25/2012
BY	CC	DWG. NO.
CHK'D		MBPPR8011011D1